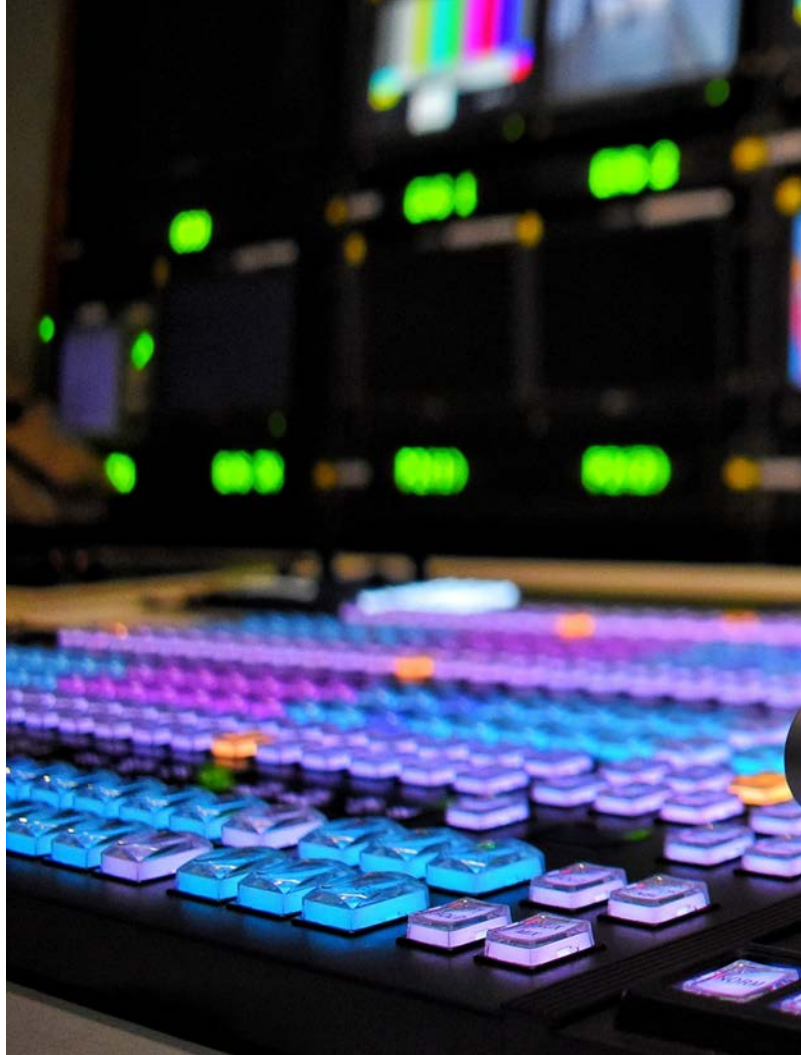


 **HIPER**
Global



Outsource your engineering, operations, and support needs to our experienced team

Multi-vendor supplier with proven services providing optimal design-to-cost at any scope and scale

Secure the right route to market with world-class hardware design review and consultancy services

A 30-year history in embedded, industrial, and high-performance computing

Maintain your competitive edge with global supply chain support and industry-leading manufacturing

You've created the next generation of your IP and you're now ready to send it out into the world - what's next? Taking that step can be daunting, but we're here to help.

Outsourcing critical hardware tasks to our specialist team can help free up resource, providing you with the focus and flexibility to fuel innovation and accelerate time to market.

Backed by our global capabilities and services, your engineering teams can thrive with renewed freedom to advance your core product and mission. By merging our systems integration and logistic services with your existing processes, we become a flexible extension of your team, working in-sync to deliver an optimal and scalable solution, no matter how complex.



OUR VISION

At HIPER Global we bring together a unique and fully bespoke suite of OEM solutions, technologies, services, and support, putting your IP at the heart of development to ensure it has everything it needs to succeed. Whether you have a concept that needs nurturing or guidance finding the right hardware, we stand ready to leverage our insights and experience, helping to turn your IP into a market-ready solution.

With manufacturing facilities in the UK, US, Europe, and Middle East, a product designed with local resources can be built and shipped anywhere. This way, we promote end-to-end flexibility throughout solution design, meeting, if not exceeding, your performance, delivery, and cost targets.

AT A GLANCE



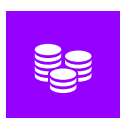
1984
Founded



380
Global employees



60+
Countries deployed to



300m
Revenue \$/2022



8
HIPER Global locations



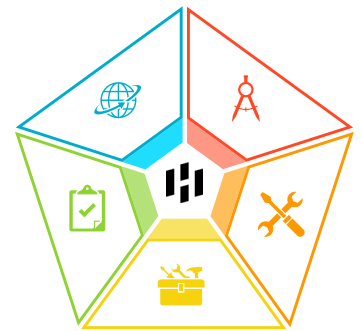
HIPR
TASE ticker



WORLD-CLASS CAPABILITIES

As OEM specialists with resources dedicated to full stack IT infrastructure, high-performance computing, and embedded technology, our proven implementation and integration services have seen great success with global enterprises and organisations.

You'll find our world-class design review and consultancy services can help create the right architecture for the challenges you're facing. HIPER Global offers the very best in technological innovation with a creative and consistent approach to quality.



ENGINEERING AND ARCHITECTURE

- Software and IP-specific product design
- Hardware platform definition
- Peer review and design consultancy
- Prototyping
- Mechanical research and development
- EOL/Revision control



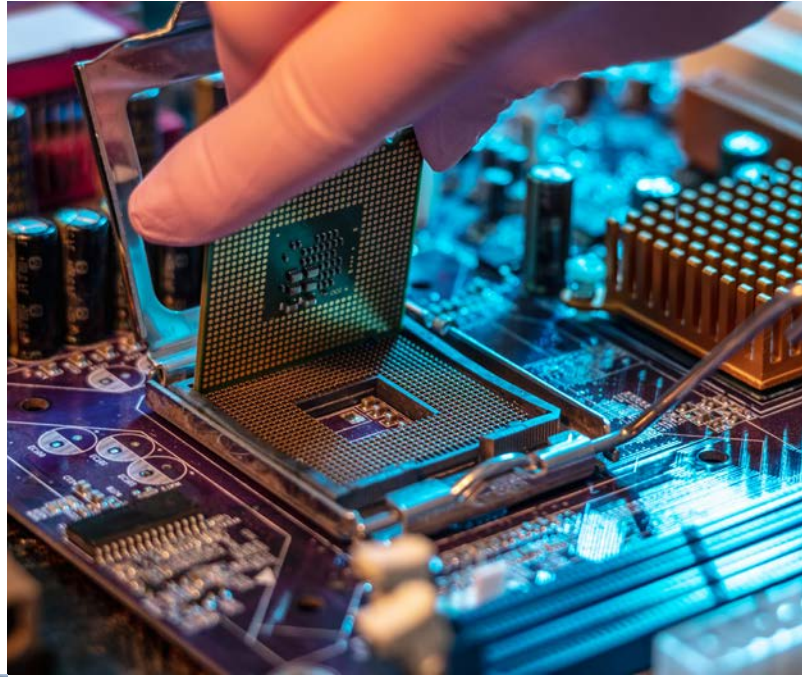
PRODUCTION AND CONFIGURATION

- Global manufacturing capabilities
- Full system integration
- COTS and custom components
- OS and application installation
- Production management
- Manuals, files, and documentation



SUPPORT

- Post-sale technical support
- RMA repairs
- AWR services
- On-site support options
- Inventory management



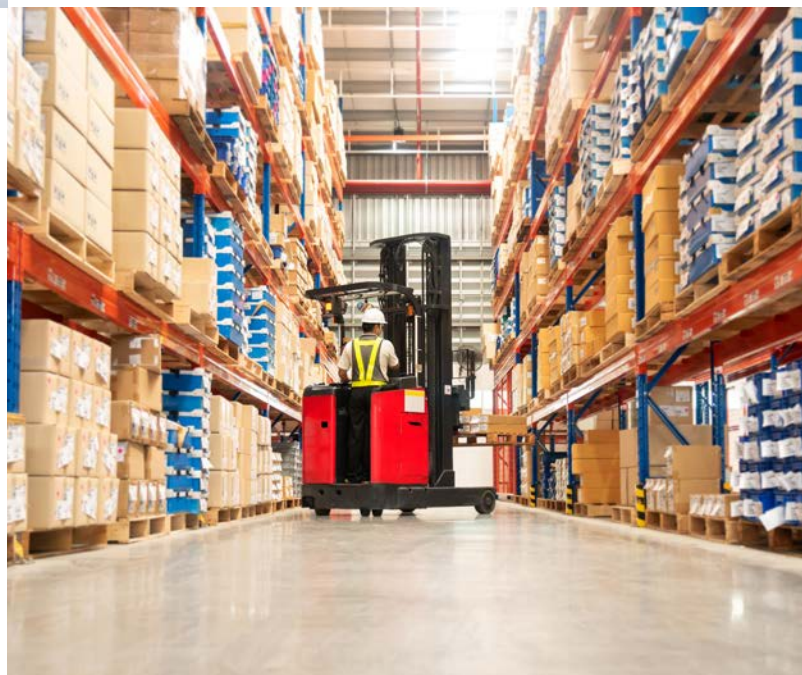
QUALITY ASSURANCE

- Quality control systems
- Compliance services
- Industry-specific regulatory certifications
- Full test capabilities
- ISO certified



SUPPLY CHAIN AND LOGISTICS

- Streamlined operations
- In-region fulfilment control
- Demand forecasting
- Buffer stock holding
- Backlog management
- Custom/Bespoke packaging
- White labelling





THE RIGHT APPROACH

Our agility is mirrored in our portfolio, granting us the scope to bring together components from a network of suppliers, ensuring you get more than just the right product but the best possible solution.

Embedded Box PCs and Gateways

Collecting and processing data across any network topology; HIPER Global bridges the gap between IT and OT with robust embedded, edge, and gateway technologies that deliver high-performance computing with maximum flexibility.

Applications include: Motion Control, Edge Intelligence, Asset Tracking



AI Inference

Combining NVIDIA® Jetson performance with a suite of AI development opportunities, our AI inference systems capture large amounts of data and deliver insights close to the source.

Applications include: ANPR, AI-driven Advertising, Renewable Energy Management



Digital Signage Players

Equipped with industry-leading content and device management software, our digital signage players provide a fully integrated solution that can connect to an array of devices including touchscreens, cameras, and kiosks.

Applications include: Interactive Kiosks, Smart Advertising, Video Walls



Switches

Quick to set-up and supporting a range of network types; our portfolio of switches includes managed and unmanaged, ethernet, PoE, protocol, and SFP options making them one of the most flexible products we offer.

Applications include: IP Surveillance, Intelligent Connectivity, Utility Analytics





Rugged

Rugged technologies are designed to thrive in the harshest of environments. Wide temperatures, high humidity, shock and vibration, immersion in water - wherever you are, we have the tools you need to stay productive.

Applications include: Field Services, Public Safety, Military Operations



Servers, Storage, and Networking

With a portfolio of rack and tower **servers** along with the latest in modular infrastructure, we offer a clear route to market for medium- and large-scale private clouds, compute clusters, and software-defined systems.

Available in primary and unstructured footprints; streamline your **storage** infrastructure with scalable, intelligent, and data-centric technologies that can help optimise your workloads, reduce system outages, and enhance operations.

With an end-to-end portfolio that's more than ready to meet the demands of the modern **networking** environment, we have the applications, hardware, and expertise to help - from the network edge to the core of the data centre.



EXCLUSIVE

**THE
MEDIA
PRODUCTION
& TECHNOLOGY
SHOW**
10-11 May 2023
Olympia London

Fully customisable down to the colour of the paint; our showcase this year features an array of options including processor, GPU, encode/decode capabilities, a rugged design for mobile and fixed applications, and production-ready customisations - all available from a single partner and route-to-market with HIPER Global.

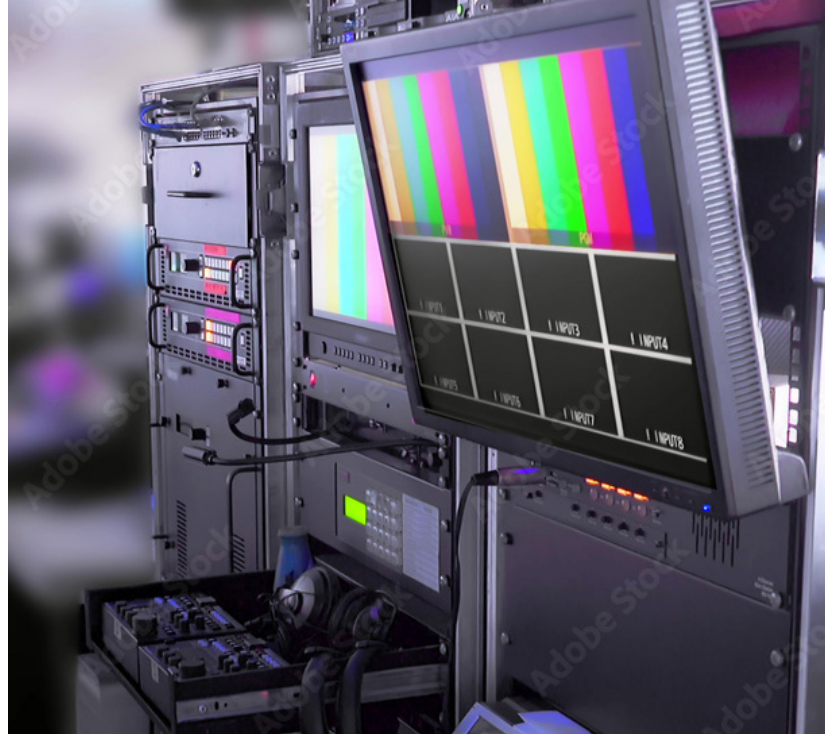


- Customisable 4U rackmount chassis
- AMD EPYC™/RYZEN™ options
- Intel® Xeon®/Core™ options
- Backplane and motherboard options
- AC/DC/Redundant PSU
- Video encode/decode and stream options
- High-performance GPU and GPU-dense options
- Fixed or removable SSD
- High-performance RAID
- Windows or Linux OS (other options available)

Appearing exclusively on Stand H73 this year; be sure to speak to the HIPER Global team to learn more!

THE FREEDOM TO INNOVATE

Using innovation to support your IP is our speciality. The very nature of our approach provides us with the freedom and scope to support a variety of industries.



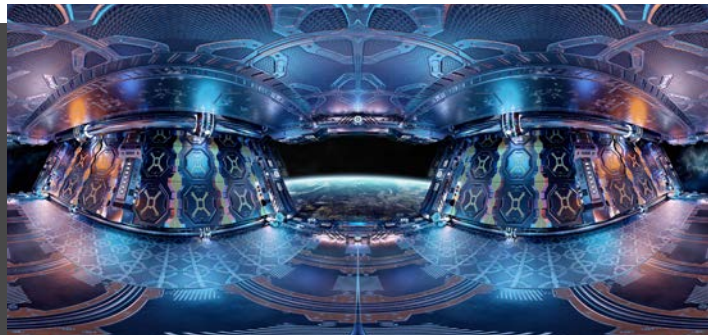
VIRTUAL PRODUCTION

The Future of Digital Production

Designed and configured completely in-house, this versatile platform allows creatives to transform their live visual experiences. By combining powerful technology with a true powerhouse of software engineering, our client continues to push the boundaries with Extended Reality technology.

Results

- A complete go-to-market product that continues to receive industry recognition and global press
- Second generation of the product is now available, delivering photo-realistic graphics with minimal latency



40%

Increase in GPU performance allowing for richer rendered worlds and environments

600+

Productions supported including LED-based visuals for global streaming services

OPTICAL TRACKING

Pinpoint Precision Across the Green

A leader in sports optical tracking; our client needed an end-to-end asset localisation system that could capture, review, and distribute content remotely, allowing for consistent and impartial analyses, and providing a new perspective from the field-of-play.

Results

- A remotely deployable, course-wide tracking system
- Improved footage output through real-time tracking
- Reduced adjudication times, fewer broadcast delays, and improved course progression times



27

Holes remote monitored with AI-driven video-processing and real-time graphics

>10m

Tournament viewers from around the world, each informed by outputs from this platform

PERFORMANCE MANAGEMENT

Enhancing Live Events

Designed in parallel with a leading ISV client; this solution hosts high-end NVIDIA® Quadro® and Sync cards to power a robust event management platform in the live performance and show industries. Our fast-to-market design ensures unique end-user requirements can be easily implemented.

Results

- An adaptable platform that can scale to meet global applications, demands, and environments
- Through their IP, this solution has helped power concerts, awards shows, sports events and much more



24/7

Rugged hardware guarantees reliability, whether statically installed or out on the road

4th Gen

Many platform options are now in their 4th iteration, helping to power worldwide installations

MOTION CONTROL

Capturing Content with Robotics

Operating remote camera rigs with cutting-edge robotics requires something a little different. We worked closely with our client to develop an industrial-grade solution that could be deployed in the field, incorporating motion control, subject tracking, and remote image capture capabilities.

Results

- A long-life and custom-designed industrial rig PC
- Value-added services included custom BIOS settings, software sourcing, and a single point of contact, leaving them to focus on what makes them unique - their IP



>50%

An increased MTBF (over the competition) has seen a decrease in field-based failure by over 50%

7

Built with industrial hardware ensuring it can be supported for a minimum of 7 years

RETAIL SECURITY

Reducing Shrink for a Luxury UK Fashion House

To combat global inventory shrinkage, our client made the decision to invest in a standardised CCTV platform that would help to reduce shrink whilst alleviating pressure on core IT infrastructure. This simplified route to procurement would complement their strategic transformation goals.

Results

- Accelerated deployment options with variables pre-negotiated for expedited shipping
- Improved standardisation across <500 stores
- Platform kept as part of centrally-hosted "Gold Guide"



51

Countries deployed to through a centrally hosted system, of which this platform is a part

1

1 quote
1 price
1 shipment
1 point of contact

LONG-TERM PARTNERS. LONG-TERM GOALS.

We provide exclusive access to thought leadership, technical knowledge, and manufacturing expertise - all collaborative resources built into the success of every solution we create.

STRATEGIC PARTNERSHIPS

THE POWER TO OUTPERFORM

From the edge to core to cloud, we stand ready to help tackle the challenges ahead as a long-term partner that drives growth and delivers the value that matters most.

01

Secure the right route to market with best-in-class design consultancy, tailored to your challenges

03

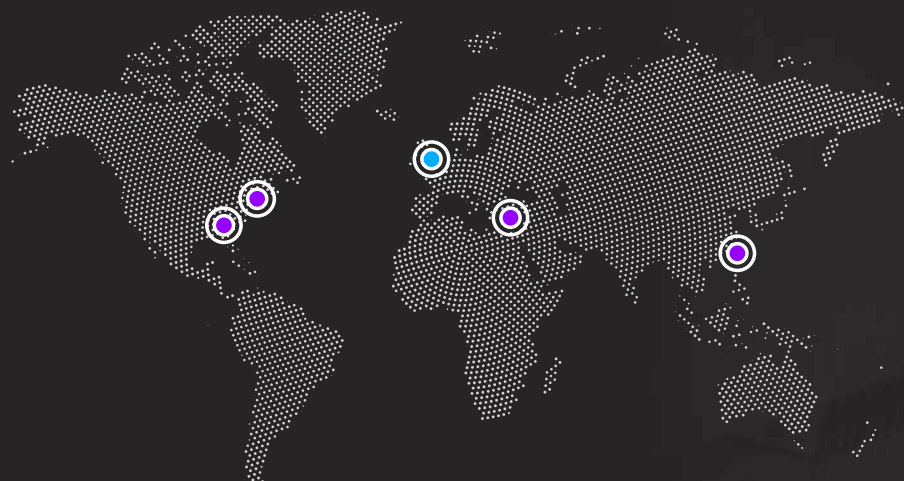
Leverage our insights, experience, and technical acumen with an holistic approach that is truly unmatched

02

Precision engineered, long-life, and tailor-made; characteristics that every HIPER Global system embodies

04

We offer the benefits of our production, supply chain, and logistical operations on a global level



HIPER Global UK

Suttons Business Park
Reading
Berkshire
RG6 1AZ

0118 929 4990
uk.sales@hiper-global.com
www.hiper-global.co.uk



All product names, logos, trademarks, and brands are property of their respective owners and are used for identification purposes only.

All information is correct at time of printing and is subject to change without notice.

Copyright © 2023 HIPER Global UK Ltd. All rights reserved.